

**622 G**

6WD Motor Grader



**JOHN DEERE**





## MAKE GRADE IN A BIG WAY

For almost six decades, John Deere motor graders have been building a reputation for outstanding control and effortless grading precision. Customer input has driven productivity boosters like onboard diagnostics within the primary in-cab display. Durable and jobsite-proven mechanical controls. Same-side service checkpoints designed to save time and effort. And the smaller, budget-friendly 622 G-Tier. Its exceptional balance, optimized performance specs, and reliable capability can help you take grading performance to the next level and your operation in a reimagined new direction.

### **Just your fit**

Our competitively priced 622 G-Tier offers contractors, townships, and municipalities the grader they asked for, with just the right amount of power and fuel savings of up to 10 percent over our larger models.

### **Precision matters**

Six-wheel drive is adjustable on the fly, enabling the 622 G-Tier to capably traverse difficult jobsite conditions.

### **The power to be productive**

Balanced engine horsepower, torque, and blade pull produce generous force and lugging ability, to deliver power to the ground, easily pull through tough spots, and tackle steep hills. John Deere motor graders are designed with optimal weight distribution over each axle, for outstanding stability and grading performance.

### **Picture yourself here**

All-around visibility is virtually unobstructed, with a clear view to the heel and toe as well as behind the moldboard. You can also see the area beneath the front axle, for increased awareness of oncoming obstacles. LCD hi-vis monitor provides intuitive, push-button access to vital machine data displayed via simple, easy-to-navigate icons and menus. High-resolution rearview camera with dedicated in-cab monitor comes standard.



### **CHOOSE LEVER-OPERATED CONTROLS OR STEERING WHEEL**

#### **Take control**

Conventional lever-operated mechanical controls are arranged in an ergonomic antler-rack configuration for intuitive use.

#### **Uptime is everything**

All daily service points, including fuel and diesel exhaust fluid (DEF), are grouped on the left side of the machine for convenient ground-level access. On the right, periodic-service points including the engine oil, hydraulic, transmission, differential, and fuel filter bank are within easy reach. Cooling package minus stacked coolers plus hinged swing-out fan simplifies core cleanout. Optional variable-speed hydraulically driven fan runs only as fast or as often as needed, to deliver quiet operation and help conserve power and fuel.

#### **Shift the focus**

Optional Auto-Shift PLUS allows operators to move the machine and work without having to use the inching pedal.

#### **Connected machines**

John Deere construction equipment comes with in-base connectivity — free from subscriptions or annual renewals. Analyze critical machine data, track utilization, review diagnostic alerts, and more from **the John Deere Operations Center™**. The Operations Center also enables John Deere Connected Support™, which uses data from thousands of connected machines to proactively identify issues and help keep you running. With your approval, your dealer can also remotely monitor machine health, diagnose problems, and even update machine software without a trip to the jobsite.\*

\*Availability varies by region and product. Options not available in every country.

#### **Premium circle productivity**

Featuring a fully sealed bearing and pinion that run smooth and quiet, the industry-leading design of the optional premium circle reduces operating costs while delivering 40-percent more torque and 15-percent more speed than a traditional circle. The premium circle eliminates having to compensate for wear in the circle. And greasing intervals of only four zerks every 500 hours simplify maintenance of the premium circle. Durable dual-input and proven single-input circles are also available.

## 622 G-TIER MOTOR GRADER SPECIFICATIONS

Engine		622 G-TIER	
Manufacturer and Model	John Deere PowerTech™ PSS 6.8L	John Deere PowerTech™ Plus 6.8L	John Deere PowerTech™ 6.8L
Non-Road Emission Standard	EPA Final Tier 4/EU Stage V	EPA Tier 3/EU Stage IIIA	EPA Tier 2/EU Stage II
Cylinders	6	6	6
Displacement	6.8L (414 cu. in.)	6.8L (414 cu. in.)	6.8L (414 cu. in.)
Net Engine Power			
Gear 1	127 kW (170 hp)	127 kW (170 hp)	127 kW (170 hp)
Gear 2	138 kW (185 hp)	138 kW (185 hp)	138 kW (185 hp)
Gear 3	149 kW (200 hp)	145 kW (195 hp)	138 kW (185 hp)
Gear 4	157 kW (210 hp)	149 kW (200 hp)	138 kW (185 hp)
Gear 5	157 kW (210 hp)*	149 kW (200 hp)*	138 kW (185 hp)*
Gear 6	160 kW (215 hp)*	153 kW (205 hp)*	138 kW (185 hp)*
Gear 7	164 kW (220 hp)*	157 kW (210 hp)*	138 kW (185 hp)*
Gear 8	168 kW (225 hp)*	157 kW (210 hp)*	138 kW (185 hp)*
Net Peak Torque	1035 Nm (763 lb.-ft.)	915 Nm (675 lb.-ft.)	831 Nm (613 lb.-ft.)
Net Torque Rise	38%	30%	44%
Aspiration	Series turbocharged, charge-air cooled	Turbocharged, charge-air cooled	Turbocharged, charge-air cooled
Lubrication	Full-flow spin-on filter and integral cooler	Full-flow spin-on filter and integral cooler	Full-flow spin-on filter and integral cooler
Air Cleaner With Restriction Indicator	Dual element, dry	Dual element, dry	Dual element, dry
*6WD not available.			
<b>Cooling</b>			
Engine Coolant, Extended Life, Rating	-37 deg. C (-34 deg. F)		
<b>Powertrain</b>			
<b>6-Wheel Drive</b>	Automatic dual-path hydrostatic drive; increases tractive effort and front-end control; includes separate left and right systems with variable-displacement pumps, axial-piston wheel motors, and freewheel at transport speeds; operator-selectable 15-position rotary aggressiveness control and inching capability down to 0 mph; precision mode (propelled by front wheels only)		
Effective Gears	1-4 forward and reverse		
Precision Mode			
Effective Gears	1-3 forward only		
Operating Speeds	0.4-8.0 km/h (0.25-5.0 mph)		
Hydrostatic Pumps (2 each)	53 cm <sup>3</sup> (3.2 cu. in.)		
Wheel Motors	57 cm <sup>3</sup> (3.5 cu. in.)		
Final Reduction	38.7:1		
<b>Transmission</b>	Direct-drive John Deere PowerShift Plus™, modulated shift-on-the-go, Event-Based Shifting (EBS), inching pedal; independent transmission reservoir with separate filtration and cooling system		
Gears			
Forward	8		
Reverse	8		
<b>Maximum Travel Speeds</b>	<i>No tire slip at 2,180 rpm, 14.0-R24 tires</i>	<b>Maximum Travel Speeds (continued)</b>	<i>No tire slip at 2,180 rpm, 14.0-R24 tires</i>
Gear 1	4.0 km/h (2.5 mph)	Gear 5	16.4 km/h (10.2 mph)
Gear 2	5.6 km/h (3.5 mph)	Gear 6	23.2 km/h (14.4 mph)
Gear 3	7.7 km/h (4.8 mph)	Gear 7	32.3 km/h (20.1 mph)
Gear 4	10.9 km/h (6.8 mph)	Gear 8	45.5 km/h (28.3 mph)
<b>Front Axle</b>	Heavy-duty welded fabrication		
Oscillation (total)	32 deg.		
Wheel Lean Angle (each direction)	20 deg.		
<b>Differentials</b>	Spiral bevel; hydraulically actuated, clutch type can be applied on-the-go; selectable manual or automatic differential lock		
<b>Steering (all models include steering wheel)</b>	All-hydraulic power-frame articulation for maneuverability and productivity; crab steering reduces side drift, positions tandems on firm ground, and increases side-slope stability		
Turning Radius (front steer and articulation)	7.21 m (284 in.) (23 ft. 8 in.)		
Articulation (both right and left)	22 deg.		
<b>Final Drives</b>	Inboard-mounted planetary sealed in cooled, filtered oil		
<b>Brakes</b>	Foot-controlled, hydraulically operated, multiple wet-disc brakes sealed in pressurized, cooled, filtered oil; both independent systems effective on all 4 tandem wheels		
Primary and Secondary Brakes	Hydraulically actuated, inboard of tandem pivot, self-adjusting, sealed in cooled and filtered oil, multi-disc (ISO 3450)		
Parking Brake	Automatically spring applied, hydraulically released, oil cooled, self-adjusting (ISO 3450)		

Images and descriptions are for general information only. Some illustrations may depict product options or accessories NOT AVAILABLE in all regions or may require modifications to meet local regulations. Images of equipment models may be digitally or AI generated, are for illustration purposes only, and may not reflect actual products, features, options, or attachments. Equipment availability may be limited. Net engine power is with standard equipment including air cleaner, exhaust system, alternator, and cooling fan at test conditions specified per ISO 9249. No derating is required up to 3050-m (10,000 ft.) altitude. Specifications and designs are subject to change without notice and, where applicable, are in accordance with SAE standards. Unless otherwise noted, specifications are based on a unit with standard equipment; 14.0 x 610-mm (24 in.) 16 PR G2, Bias tires; and 3.66-m x 610-mm x 22-mm (12 ft. x 24 in. x 7/8 in.) high-strength, wear-resistant moldboard with 152-mm x 16-mm (6 in. x 5/8 in.) Dura-Max® through-hardened-steel cutting edges. Weights include lubricants, coolants, full fuel tank, and 79-kg (175 lb.) operator. For complete details, contact your John Deere dealer.

## 622 G-TIER MOTOR GRADER SPECIFICATIONS

# 622

# G

Hydraulics		622 G-TIER	
Type	Closed-center, pressure-compensated load-sensing (PCLS), variable-displacement piston pump		
Maximum Pump Flow	212 L/min. (56 gpm)		
Maximum System Pressure	18 961 kPa (2,750 psi)		
Pump Displacement	90 cm <sup>3</sup> (5.5 cu. in.)		
Blade Function			
All-hydraulic, industry-standard lever placement of blade-function controls; includes float position; 7 discrete saddle positions			
Blade Range			
Lift Above Ground	490 mm (19.3 in.)		
Blade Side Shift (right or left)	683 mm (26.9 in.)		
Pitch at Ground Line			
Forward	42 deg.		
Back	5 deg.		
Shoulder Reach Outside Wheels (frame straight, right or left)	2083 mm (82.0 in.) (6 ft. 10 in.)		
Bank Cut Angle (right or left)	90 deg.		
Blade Pull			
At Maximum Operating Weight	20 412 kg (45,000 lb.)		
Electrical			
Solid-state load center and sealed-switch module	<i>EPA Final Tier 4/EU Stage V</i>	<i>EPA Tier 3/EU Stage IIIA and EPA Tier 2/EU Stage II</i>	
Voltage	24 volt	24 volt	
Number of Batteries	2	2	
Battery Capacity	1,400 CCA	1,010 CCA	
Optional	—	1,400 CCA	
Reserve Capacity	440 min.	190 min.	
Optional	—	440 min.	
Amp-Hour Rating	224 amp-hour	110 amp-hour	
Optional	—	224 amp-hour	
Alternator Rating			
Base	130 amp	100 amp	
Optional	—	130 amp	
Lights	Driving lights; 2 high- and 2 low-beam halogen headlights; front and rear LED turn signals and marker lights; LED brake and hazard warning lights		
Mainframe			
Type	Welded box construction		
Width (minimum)	307 mm (12.1 in.)		
Height (minimum)	307 mm (12.1 in.)		
Thickness			
Side	16 mm (0.63 in.)		
Top and Bottom Plate	23 mm (0.89 in.)		
Draft Frame (drawbar)			
Welded box construction machined for flatness with double ball-and-socket pivot connection			
Circle			
Welded construction, heat-treated, machined for flatness			
	<i>Standard Circle</i>	<i>Premium Circle</i>	
Circle Diameter	1524 mm (60 in.)	1524 mm (60 in.)	
Rotation	360 deg.	360 deg.	
Surface	Quick-change bronze or nylon wear inserts	Sealed and lubricated roller element slewing bearing	
Pinion/Ring-Gear Connection	Adjustable backlash and open for serviceability	No adjustment; fully sealed and lubricated	
Drive	Hydraulic motor and worm gear with positive lock	Hydraulic motor and worm gear with positive lock	
Slip Clutch	Option	Standard	
Circle Side Shift (right and left)	787 mm (31 in.)	787 mm (31 in.)	
Moldboard			
High-strength, pre-stressed for higher strength; wear-resistant, high-carbon steel and reversible end bits; blade side-shift wear system includes quick-change replaceable wear inserts and quick-adjust jackscrew system			
Base Length	3.66 m (144 in.) (12 ft. 0 in.)	4.27 m (168 in.) (14 ft. 0 in.)	
Height (measured along arc, including cutting edge)	610 mm (24 in.)	610 mm (24 in.)	
Thickness	22 mm (0.88 in.)	22 mm (0.88 in.)	

Images and descriptions are for general information only. Some illustrations may depict product options or accessories NOT AVAILABLE in all regions or may require modifications to meet local regulations. Images of equipment models may be digitally or AI generated, are for illustration purposes only, and may not reflect actual products, features, options, or attachments. Equipment availability may be limited. Net engine power is with standard equipment including air cleaner, exhaust system, alternator, and cooling fan at test conditions specified per ISO 9249. No derating is required up to 3050-m (10,000 ft.) altitude. Specifications and designs are subject to change without notice and, where applicable, are in accordance with SAE standards. Unless otherwise noted, specifications are based on a unit with standard equipment; 14.0 x 610-mm (24 in.) 16 PR G2, Bias tires; and 3.66-m x 610-mm x 22-mm (12 ft. x 24 in. x 7/8 in.) high-strength, wear-resistant moldboard with 152-mm x 16-mm (6 in. x 5/8 in.) Dura-Max® through-hardened-steel cutting edges. Weights include lubricants, coolants, full fuel tank, and 79-kg (175 lb.) operator. For complete details, contact your John Deere dealer.

# 622 G-TIER

Cutting Edge			622 G-TIER		
Dura-Max™ through-hardened steel edge					
Thickness	16 mm (0.62 in.)				
Width	152 mm (6 in.)				
Scarifiers					
Type	<i>Front</i> V-type toolbar with 2-pitch positions and hydraulic float		<i>Mid-mount</i> Radial linkage, with NeverGrease™ pin joints; V-type manual 3-pitch positions and hydraulic float		
Width of Cut	1.20 m (48 in.) (4 ft. 0 in.)		1.19 m (46.7 in.) (3 ft. 11 in.)		
Number of Shanks/Teeth	5 (maximum capacity 9)		11		
Lift Above Ground	589 mm (23.2 in.)		335 mm (13.2 in.)		
Maximum Depth	335 mm (13.2 in.)		325 mm (12.8 in.)		
Shank					
Spacing	146 mm (5.75 in.)		117 mm (4.6 in.)		
Size	25 x 76 mm (1 x 3 in.)		25 x 76 mm (1 x 3 in.)		
Front Lift Group (Balderson-style)					
Parallel linkage, mechanical pins, and hydraulic float					
Lift					
Above Ground (top of tube)	1864 mm (73.4 in.)				
Range	988 mm (38.9 in.)				
Front Dozer Blade					
Parallel linkage and hydraulic float					
Lift Above Ground	706 mm (27.8 in.)				
Rear Ripper/Scarifier					
Parallel linkage, with NeverGrease pin joints, hydraulic float, and integrated hitch					
	<i>Ripper</i>		<i>Scarifier</i>		
Width of Cut	2.21 m (87.2 in.) (7 ft. 3 in.)		2.18 m (86.0 in.) (7 ft. 2 in.)		
Number of Shanks/Teeth	3 (maximum capacity 5)		None standard (maximum capacity 9)		
Lift Above Ground	602 mm (23.7 in.)		810 mm (31.9 in.)		
Maximum Depth	426 mm (16.8 in.)		323 mm (12.7 in.)		
Shank Size	61.5 x 133 mm (2.42 x 5.25 in.)		25 x 76 mm (1 x 3 in.)		
Operator Station					
Low-profile cab with ROPS (ISO 3471-2008) and FOPS (ISO 3449-2005)					
Tires/Wheels					
	<i>14R24 on 254-mm (10 in.) Rim</i>		<i>17.5R25 on 356-mm (14 in.) Rim</i>		
Wheel Tread on Ground	2.08 m (82.0 in.)		2.16 m (85.0 in.)		
Ground Clearance (front axle)	587 mm (23.1 in.)		587 mm (23.1 in.)		
Serviceability					
<b>Refill Capacities</b>	<i>EPA Final Tier 4/EU Stage V</i>		<i>EPA Tier 3/EU Stage IIIA and EPA Tier 2/EU Stage II</i>		
Fuel Tank	397.0 L (105 gal.)		303.0 L (80 gal.)		
Diesel Exhaust Fluid (DEF) Tank	22.5 L (6 gal.)		—		
Cooling System	51.0 L (13.5 gal.)		44.0 L (11.6 gal.)		
Engine Oil With Filter	31.5 L (8.3 gal.)		26.0 L (6.9 gal.)		
Transmission Fluid	28.4 L (7.5 gal.)		28.4 L (7.5 gal.)		
Differential Housing	38.0 L (10 gal.)		38.0 L (10 gal.)		
Tandem Housings (each)	74.0 L (19.5 gal.)		74.0 L (19.5 gal.)		
Circle Gearbox	5.7 L (1.5 gal.)		5.7 L (1.5 gal.)		
Hydraulic Reservoir	60.5 L (16 gal.)		53.0 L (14 gal.)		
Operating Weights					
	<i>EPA Final Tier 4/EU Stage V</i>		<i>EPA Tier 3/EU Stage IIIA and EPA Tier 2/EU Stage II</i>		
With Full Fuel Tank, 3.66-m x 610-mm x 22-mm (12 ft. x 24 in. x 7/8 in.) Moldboard With 152-mm x 16-mm (6 in. x 5/8 in.) Cutting Edge, 14-24 Bias L2 Tires, and 79-kg (175 lb.) Operator					
Front	4802 kg (10,587 lb.)		4886 kg (10,771 lb.)*		
Rear	11 999 kg (26,453 lb.)		11 270 kg (24,846 lb.)*		
Total	16 801 kg (37,040 lb.)		16 156 kg (35,617 lb.)*		
Typical Operating Weight With Front Push Block, Rear Ripper/Scarifier, and Other Equipment					
Front	5476 kg (12,072 lb.)		5617 kg (12,383 lb.)		
Rear	13 542 kg (29,856 lb.)		12 802 kg (28,223 lb.)		
Total	19 018 kg (41,928 lb.)		18 419 kg (40,607 lb.)		
Maximum Operating Weight	22 680 kg (50,000 lb.)		22 680 kg (50,000 lb.)		

\*With 13-24 Bias L2 tires.

Images and descriptions are for general information only. Some illustrations may depict product options or accessories NOT AVAILABLE in all regions or may require modifications to meet local regulations. Images of equipment models may be digitally or AI generated, are for illustration purposes only, and may not reflect actual products, features, options, or attachments. Equipment availability may be limited. Net engine power is with standard equipment including air cleaner, exhaust system, alternator, and cooling fan at test conditions specified per ISO 9249. No derating is required up to 3050-m (10,000 ft.) altitude. Specifications and designs are subject to change without notice and, where applicable, are in accordance with SAE standards. Unless otherwise noted, specifications are based on a unit with standard equipment; 14.0 x 610-mm (24 in.) 16 PR G2, Bias tires; and 3.66-m x 610-mm x 22-mm (12 ft. x 24 in. x 7/8 in.) high-strength, wear-resistant moldboard with 152-mm x 16-mm (6 in. x 5/8 in.) Dura-Max® through-hardened-steel cutting edges. Weights include lubricants, coolants, full fuel tank, and 79-kg (175 lb.) operator. For complete details, contact your John Deere dealer.

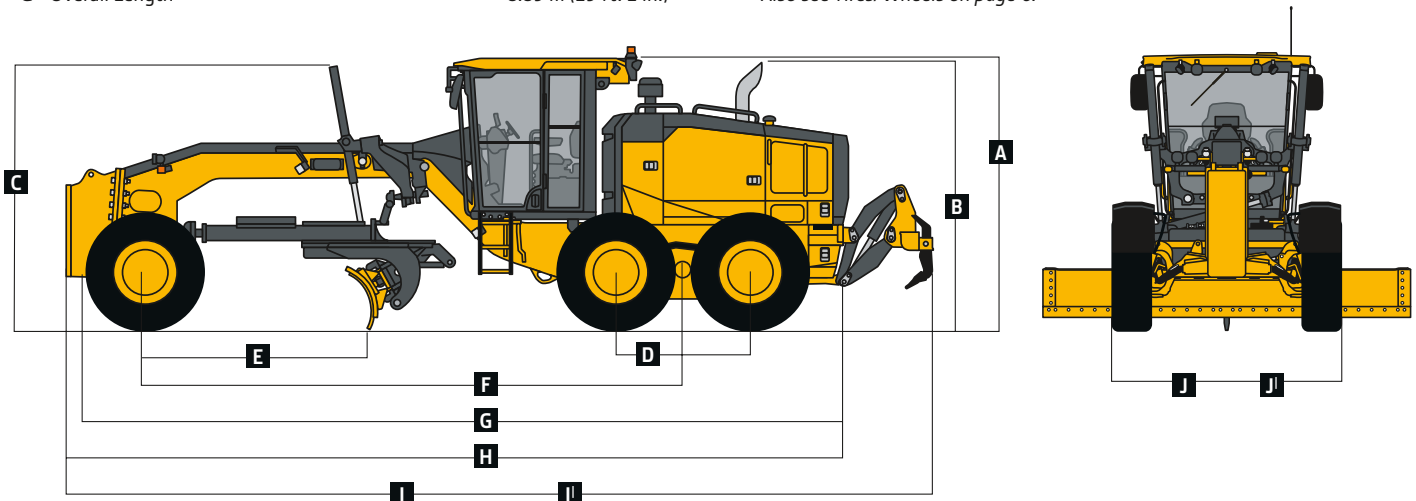
Option Weights	622 G-TIER
<b>Moldboards With Through-Hardened Dura-Max Cutting Edge</b>	
3.66 m x 610 mm x 22 mm (12 ft. x 24 in. x 7/8 in.) With 152-mm x 16-mm (6 in. x 5/8 in.) Cutting Edge and 16-mm (5/8 in.) Hardware	0 kg (0 lb.)
3.66 m x 610 mm x 22 mm (12 ft. x 24 in. x 7/8 in.) With 203-mm x 19-mm (8 in. x 3/4 in.) Cutting Edge and 16-mm (5/8 in.) Hardware	45 kg (99 lb.)
4.27 m x 610 mm x 22 mm (14 ft. x 24 in. x 7/8 in.) With 152-mm x 16-mm (6 in. x 5/8 in.) Cutting Edge and 16-mm (5/8 in.) Hardware	105 kg (231 lb.)
4.27 m x 610 mm x 22 mm (14 ft. x 24 in. x 7/8 in.) With 203-mm x 19-mm (8 in. x 3/4 in.) Cutting Edge and 16-mm (5/8 in.) Hardware	157.4 kg (347 lb.)
<b>Extensions, 610 mm (2 ft.) (right or left)</b>	
For Use With 610-mm (24 in.) Moldboards	116 kg (255 lb.)
<b>Overlay End Bits, Reversible (one pair)</b>	
For 152-mm (6 in.) Cutting Edge	19.5 kg (43 lb.)
For 203-mm (8 in.) Cutting Edge	23 kg (51 lb.)
Circle-Drive Slip Clutch	9 kg (20 lb.)
<b>Circle</b>	
Standard	0 kg (0 lb.)
Premium	289 kg (638 lb.)
Moldboard Impact-Absorption System	43 kg (95 lb.)
Ripper/Scarifier, Rear Mounted With Hitch and Ripper Shanks (3)	1139 kg (2,510 lb.)
Scarifier Shanks With Teeth (9 for rear ripper/scarifier)	68 kg (150 lb.)
Rear Counterweight With Integral Rear Hitch	727 kg (1,603 lb.)
Rear Hitch	54.4 kg (120 lb.)
Push Block, Front	907 kg (2,000 lb.)
Scarifier Front Mount With Teeth (5)	831 kg (1,833 lb.)

Machine Dimensions	
<b>A</b> Height to Top of Cab	3.18 m (10 ft. 5 in.)
<b>B</b> Height to Top of Exhaust	3.10 m (10 ft. 2 in.)
<b>C</b> Height to Top of Blade-Lift Cylinders	3.05 m (10 ft. 0 in.)
<b>D</b> Tandem Axle Spacing	1.54 m (5 ft. 1 in.)
<b>E</b> Blade Base	2.57 m (8 ft. 5 in.)
<b>F</b> Wheelbase	6.16 m (20 ft. 3 in.)
<b>G</b> Overall Length	8.89 m (29 ft. 2 in.)

Option Weights (continued)	622 G-TIER
<b>Scarifier (continued)</b>	
Mid-Mount With Teeth (11)	1481 kg (3,265 lb.)
Front Lift Group (Balderson-style)	763 kg (1,682 lb.)
<b>Tires</b>	
14.00-24, 16 PR G2	-220.4 kg (-486 lb.)
17.5-25, 16 PR G2/L2	-106 kg (-234 lb.)
14.00-R24, Radial, G2/L2 General Purpose	0 kg (0 lb.)
14.00-R24, Radial, G2/L2 Snow	40.8 kg (90 lb.)
17.5-R25, Radial, L2 General Purpose	51.7 kg (114 lb.)
17.5-R25, Radial, G2/L2 Snow	95.3 kg (210 lb.)
17.5-R25, Radial, G3/L3 General Purpose	141.5 kg (312 lb.)
<b>Multi-Piece Rims</b>	
254 mm x 610 mm (10 in. x 24 in.)	0 kg (0 lb.)
356 mm x 635 mm (14 in. x 25 in.)	85.3 kg (188 lb.)
<b>Fenders</b>	
Front	99 kg (218 lb.)
Rear	158 kg (348 lb.)
Opening Front and Side Windows	14.5 kg (32 lb.)
Premium Air-Suspension, Heated Seat With Adjustable Arm- and Headrests	13 kg (28 lb.)
Coolant Heater	4 kg (9 lb.)
Quick Service	11 kg (24 lb.)
Secondary Steering	26 kg (58 lb.)
Fire Extinguisher	14.5 kg (32 lb.)
<b>Lighting Packages</b>	
10 Halogen Lights	4.5 kg (10 lb.)
18 Halogen Lights	8 kg (18 lb.)
18 LED Lights	7 kg (16 lb.)
High-Front Light Bar for Snowplowing	20 kg (44 lb.)
Auxiliary Hydraulic Control Valve Section and Controls	7 kg (15 lb.)
Hydraulics for Front-Mounted Equipment	9 kg (19 lb.)

Machine Dimensions (continued)	
<b>H</b> Overall Length With Scarifier	9.69 m (31 ft. 9 in.)
<b>I</b> Overall Length With Push Block and Ripper	9.99 m (32 ft. 9 in.)
<b>I'</b> Overall Length With Scarifier and Ripper	10.59 m (34 ft. 9 in.)
Overall Length With Front-Mounted Blade and Ripper	10.60 m (34 ft. 9 in.)
<b>J</b> Overall Width With 14.00-R24 Tires*	2.49 m (8 ft. 2 in.)
<b>J'</b> Overall Width With 17.5-R25 Tires*	2.64 m (8 ft. 8 in.)

\*Also see Tires/Wheels on page 6.



Images and descriptions are for general information only. Some illustrations may depict product options or accessories NOT AVAILABLE in all regions or may require modifications to meet local regulations. Images of equipment models may be digitally or AI generated, are for illustration purposes only, and may not reflect actual products, features, options, or attachments. Equipment availability may be limited. Net engine power is with standard equipment including air cleaner, exhaust system, alternator, and cooling fan at test conditions specified per ISO 9249. No derating is required up to 3050-m (10,000 ft.) altitude. Specifications and designs are subject to change without notice and, where applicable, are in accordance with SAE standards. Unless otherwise noted, specifications are based on a unit with standard equipment, 14.0 x 610-mm (24 in.) 16 PR G2, Bias tires; and 3.66-m x 610-mm x 22-mm (12 ft. x 24 in. x 7/8 in.) high-strength, wear-resistant moldboard with 152-mm x 16-mm (6 in. x 5/8 in.) Dura-Max® through-hardened-steel cutting edges. Weights include lubricants, coolants, full fuel tank, and 79-kg (175 lb.) operator. For complete details, contact your John Deere dealer.



MG622GAB (25-11)



**JOHN DEERE**